

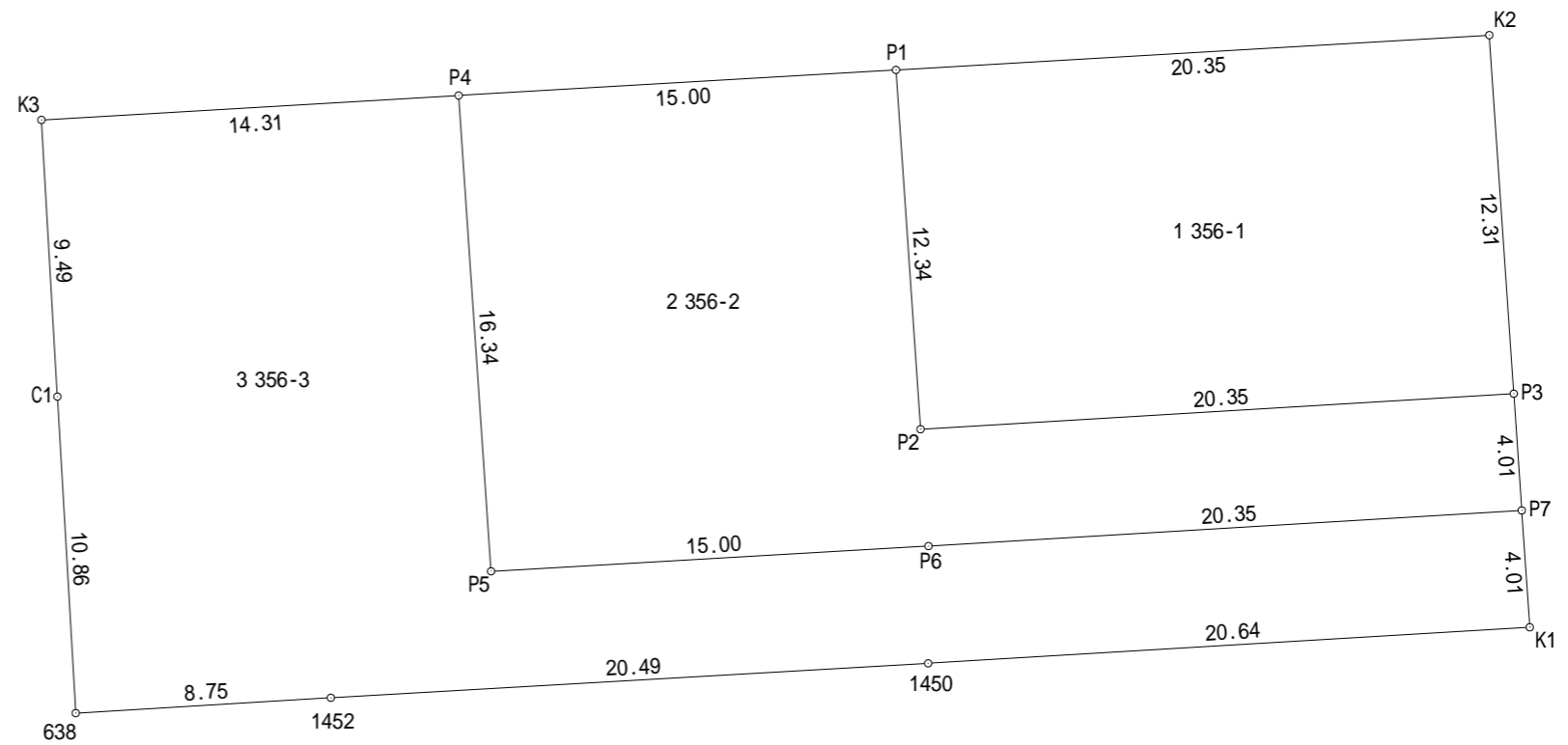
求積表

地番 1 356-1				
NO	Xn	Yn	Yn+1-Yn-1	Xn · (Yn+1-Yn-1)
K2	43518.076	-75952.489	21.154	920581.379704
P3	43505.794	-75951.651	-19.476	-847318.843944
P2	43504.575	-75971.965	-21.154	-920295.779550
P1	43516.886	-75972.805	19.476	847534.871736
合計				501.627946
合計面積				250.8139730
地積				250.81 m ²

地番 2 356-2				
NO	Xn	Yn	Yn+1-Yn-1	Xn · (Yn+1-Yn-1)
P3	43505.794	-75951.651	20.587	895653.781078
P7	43501.793	-75951.378	-20.041	-871819.433513
P6	43500.574	-75971.692	-35.290	-1535135.256460
P5	43499.709	-75986.668	-16.088	-699823.318392
P4	43516.009	-75987.780	13.863	603262.432767
P1	43516.886	-75972.805	15.815	688219.552090
P2	43504.575	-75971.965	21.154	920295.779550
合計				653.537120
合計面積				326.7685600
地積				326.76 m ²

地番 3 356-3				
NO	Xn	Yn	Yn+1-Yn-1	Xn · (Yn+1-Yn-1)
P7	43501.793	-75951.378	20.587	895571.412491
K1	43497.792	-75951.105	-20.325	-884092.622400
1450	43496.556	-75971.703	-41.050	-1785533.623800
1452	43495.375	-75992.155	-29.188	-1269543.005500
638	43494.851	-76000.891	-9.362	-407198.795062
C1	43505.693	-76001.517	-1.174	-51075.683582
K3	43515.172	-76002.065	13.737	597767.917764
P4	43516.009	-75987.780	15.397	670015.990573
P5	43499.709	-75986.668	16.088	699823.318392
P6	43500.574	-75971.692	35.290	1535135.256460
合計				870.165336
合計面積				435.0826680
地積				435.08 m ²

総合計面積	1012.6652010 m ²
-------	-----------------------------



求積図	
所在	高崎市中里町字押出356
縮尺	1/250
作成日	令和3年12月4日
作成者	土地家屋調査士 須長 亮